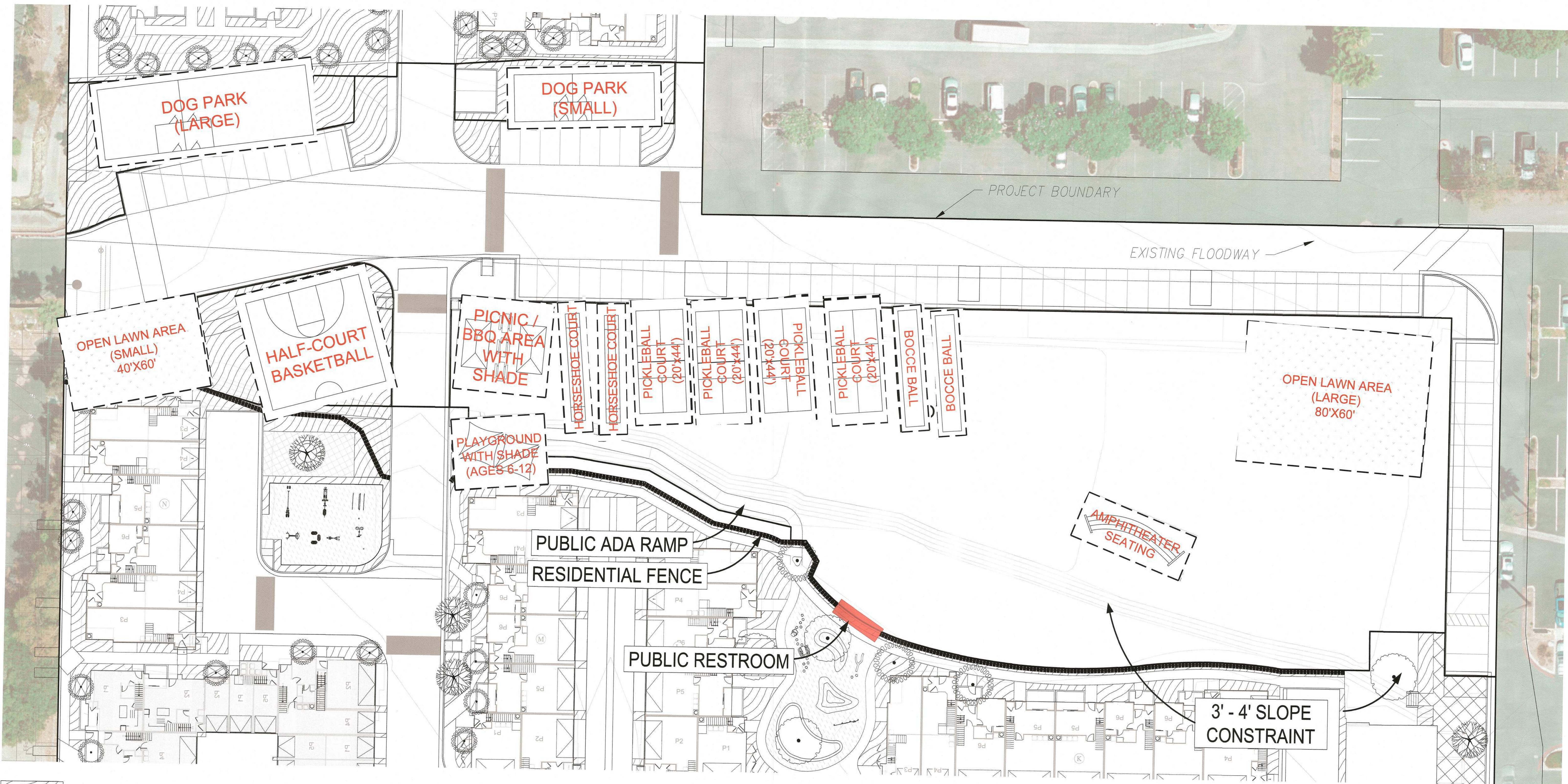
 PARK ACCESSIBLE TO PUBLIC (PRIVATELY MAINTAINED)

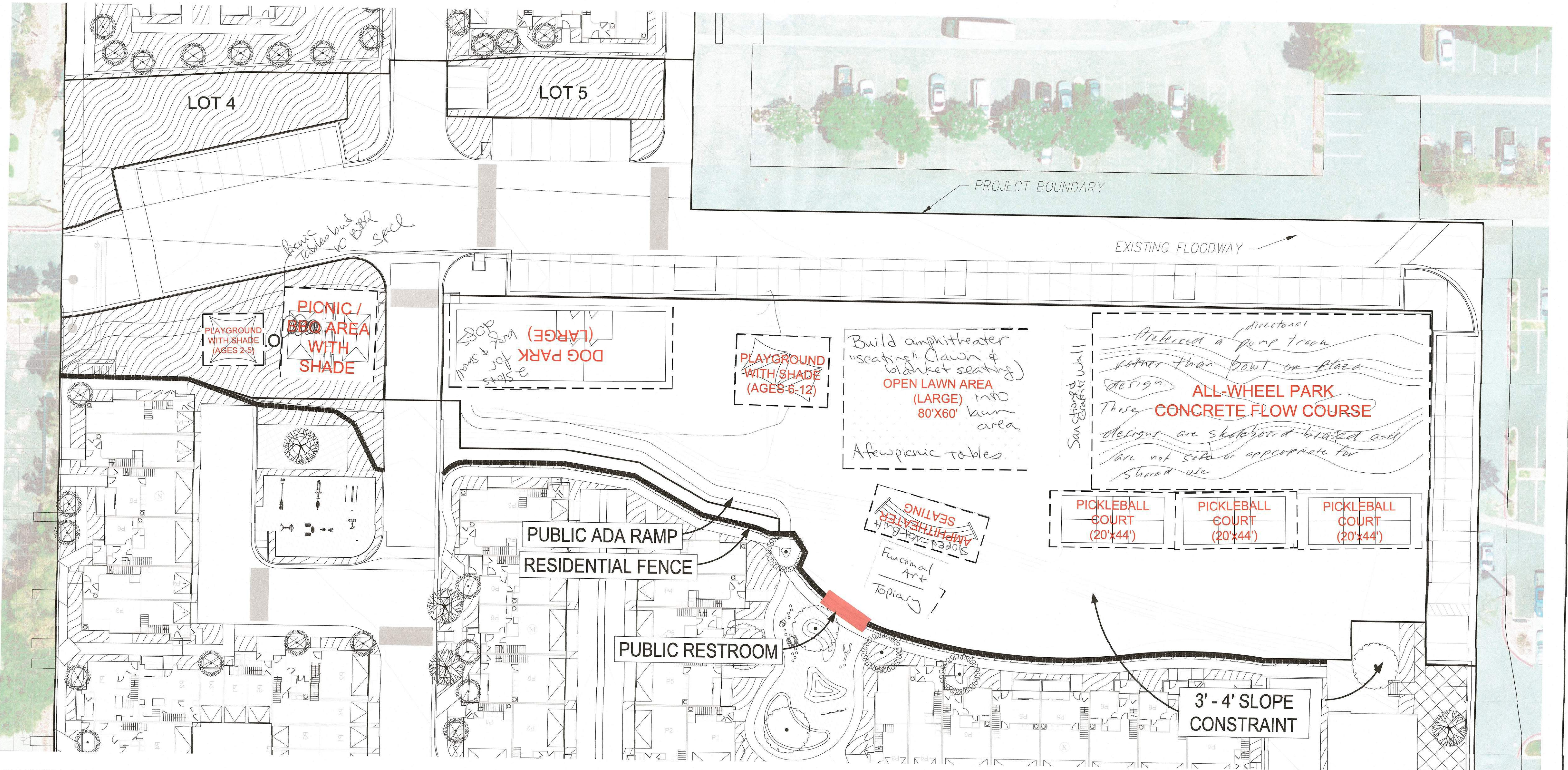
SAN MARCOS RESTAURANT ROW PARK COMMUNITY MEETING - PARK BASE




SAN MARCOS RESTAURANT ROW PARK

COMMUNITY MEETING - PARK BASE

Russell



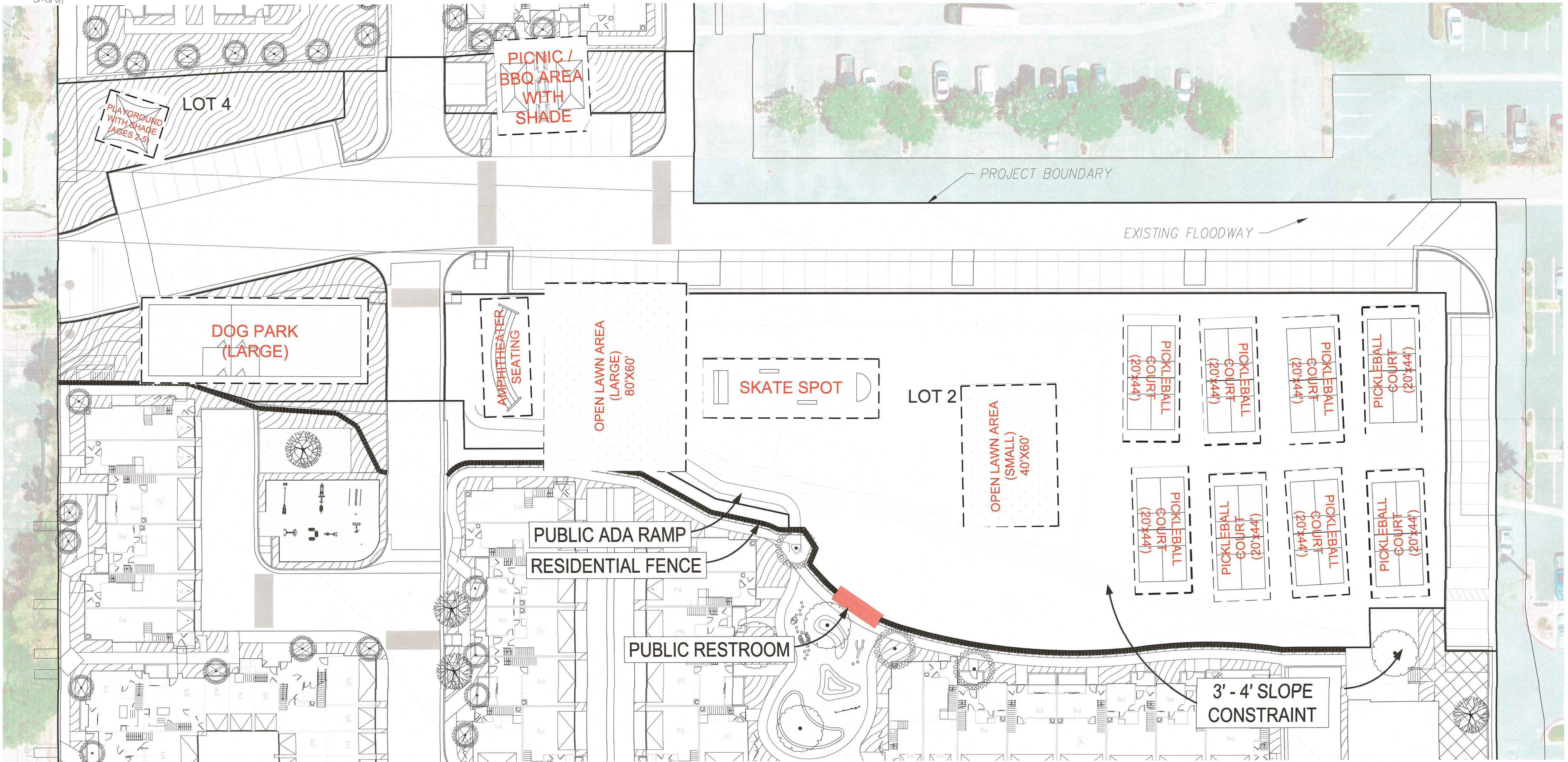
 PARK ACCESSIBLE TO PUBLIC (PRIVATELY MAINTAINED)

Use Dumpsters instead of trash cans. Park make people store trash cans in garages.

SAN MARCOS RESTAURANT ROW PARK
COMMUNITY MEETING - PARK BASE

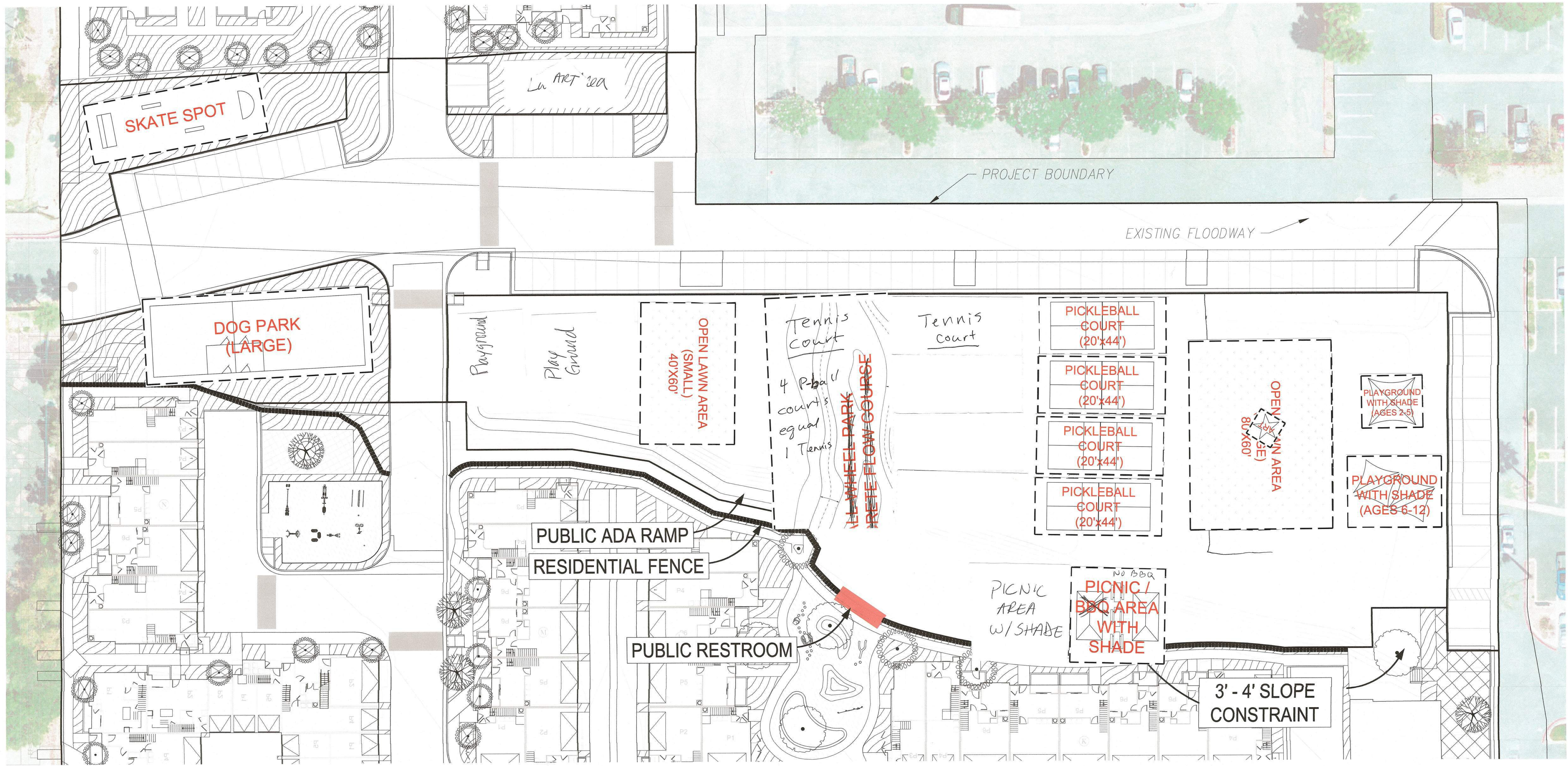
More Parking somewhere

PICKLEBALL GROUP



 PARK ACCESSIBLE TO PUBLIC (PRIVATELY MAINTAINED)

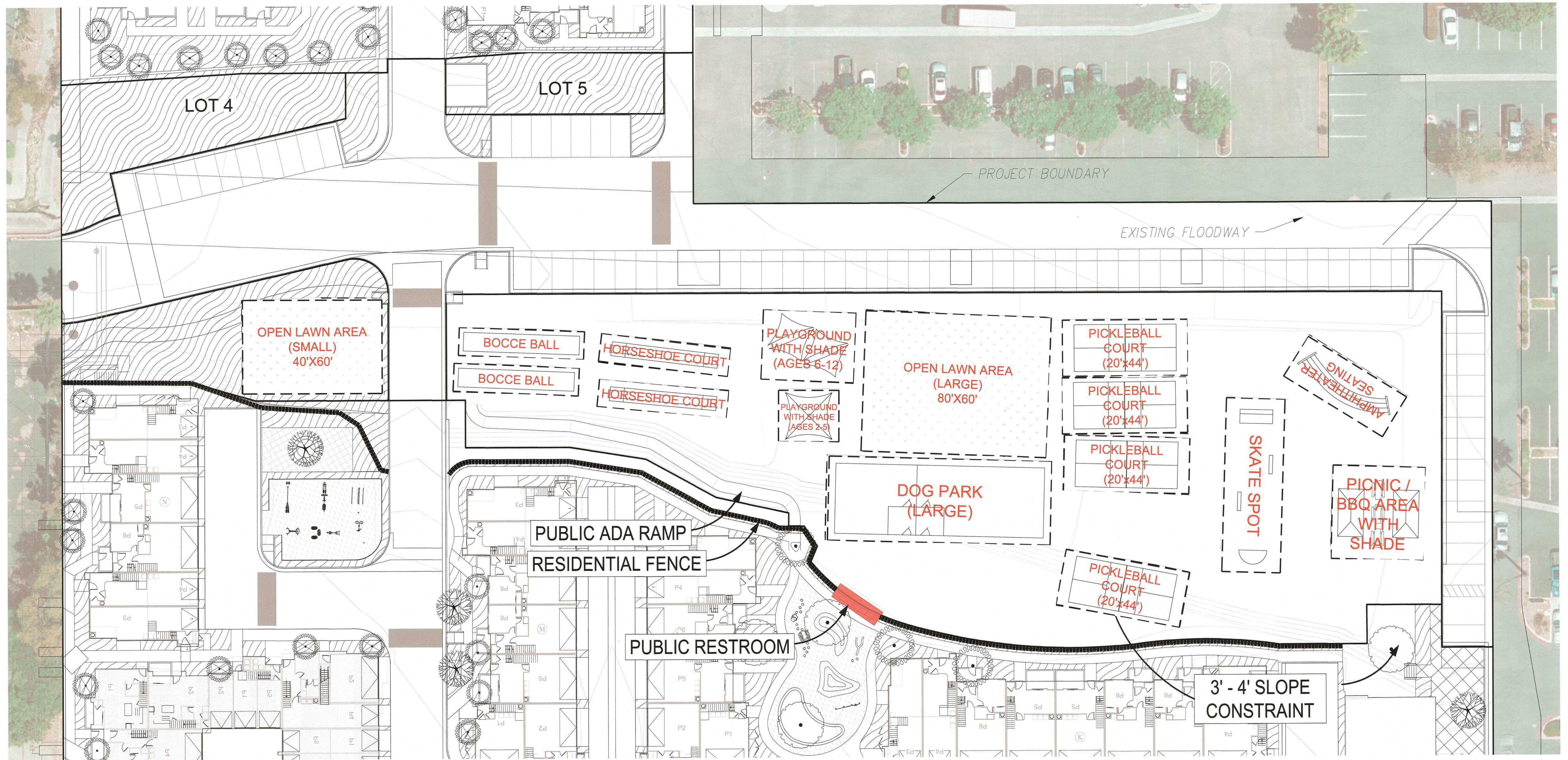
SAN MARCOS RESTAURANT ROW PARK
COMMUNITY MEETING - PARK BASE



 PARK ACCESSIBLE TO PUBLIC (PRIVATELY MAINTAINED)

SAN MARCOS RESTAURANT ROW PARK

COMMUNITY MEETING - PARK BASE



 PARK ACCESSIBLE TO PUBLIC (PRIVATELY MAINTAINED)

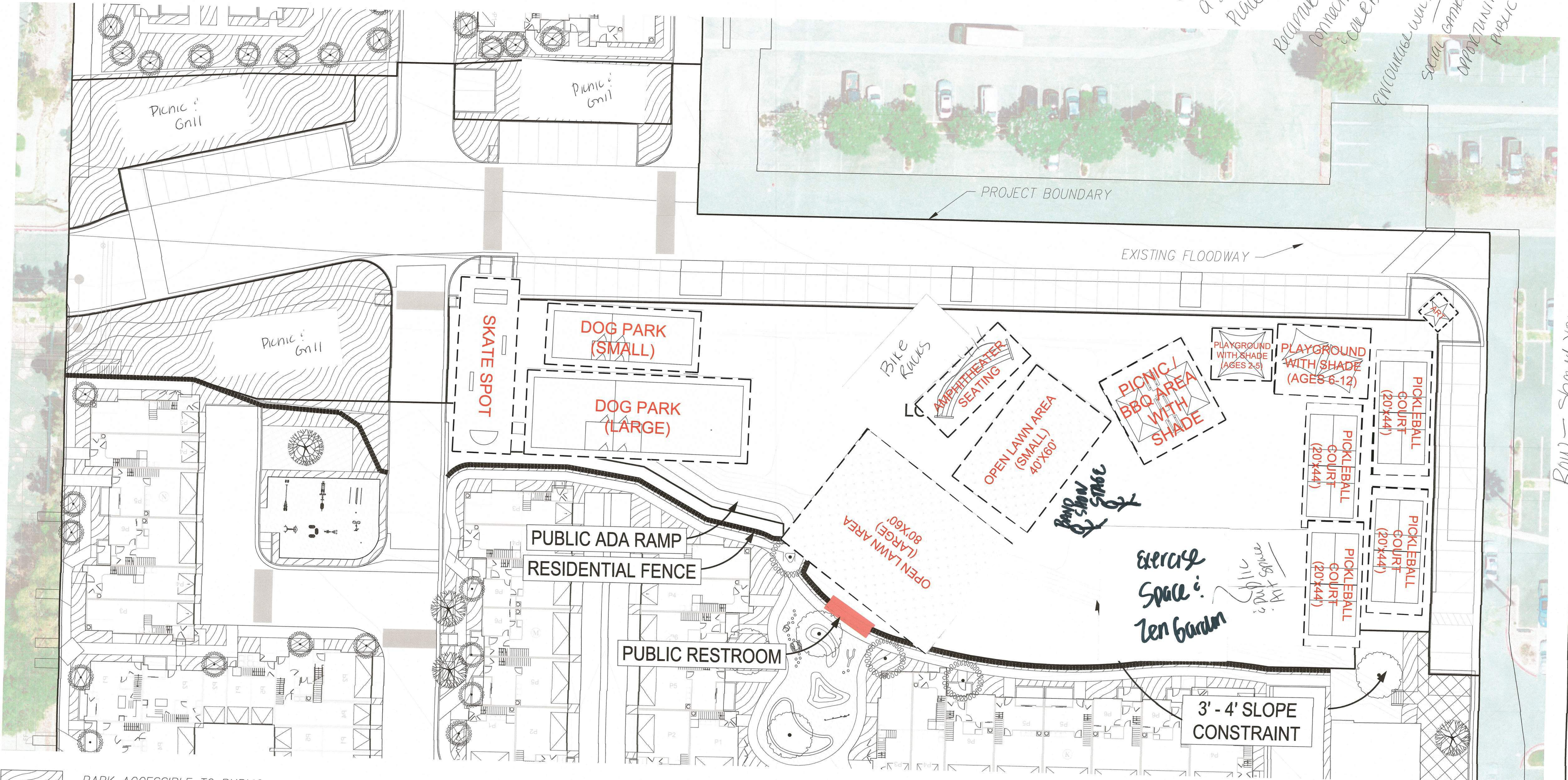
SAN MARCOS RESTAURANT ROW PARK

COMMUNITY MEETING - PARK BASE

A major crisis facing America today is mental health. Being in nature or viewing scenes of nature, reduces anger, fear, and stress and increases pleasant feelings. Nature makes you feel better. Nature contributes to well being, reducing blood pressure, heart rate, muscle tension and stress.

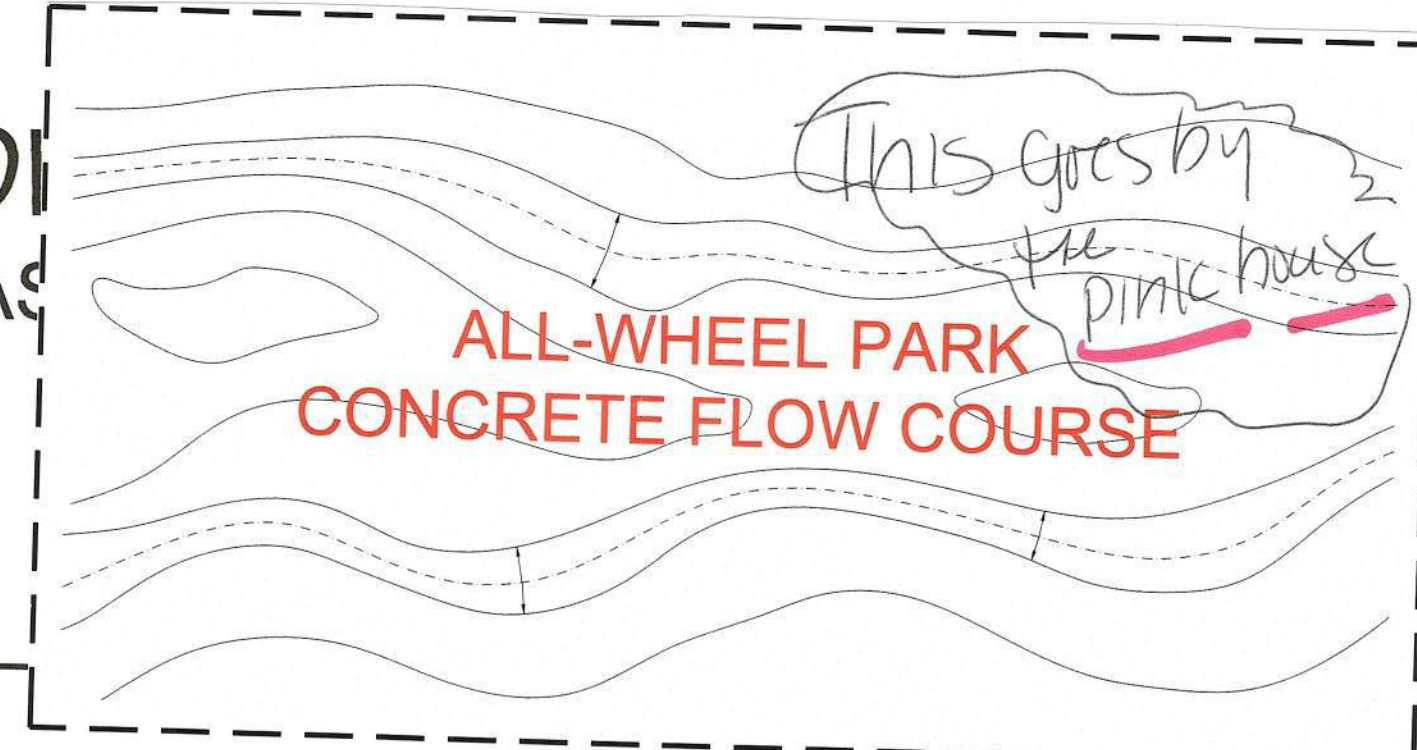
Clear a size of place

Recreate Fun, Connection, & Care
 Encourage with labeling
 Social gathering nodes
 Opportunities for public art

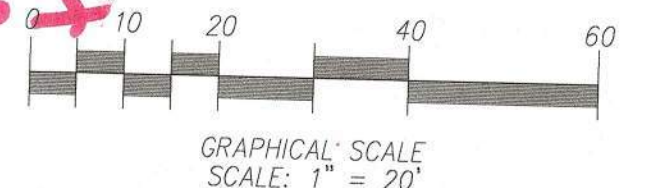


PARK ACCESSIBLE TO PUBLIC (PRIVATELY MAINTAINED)

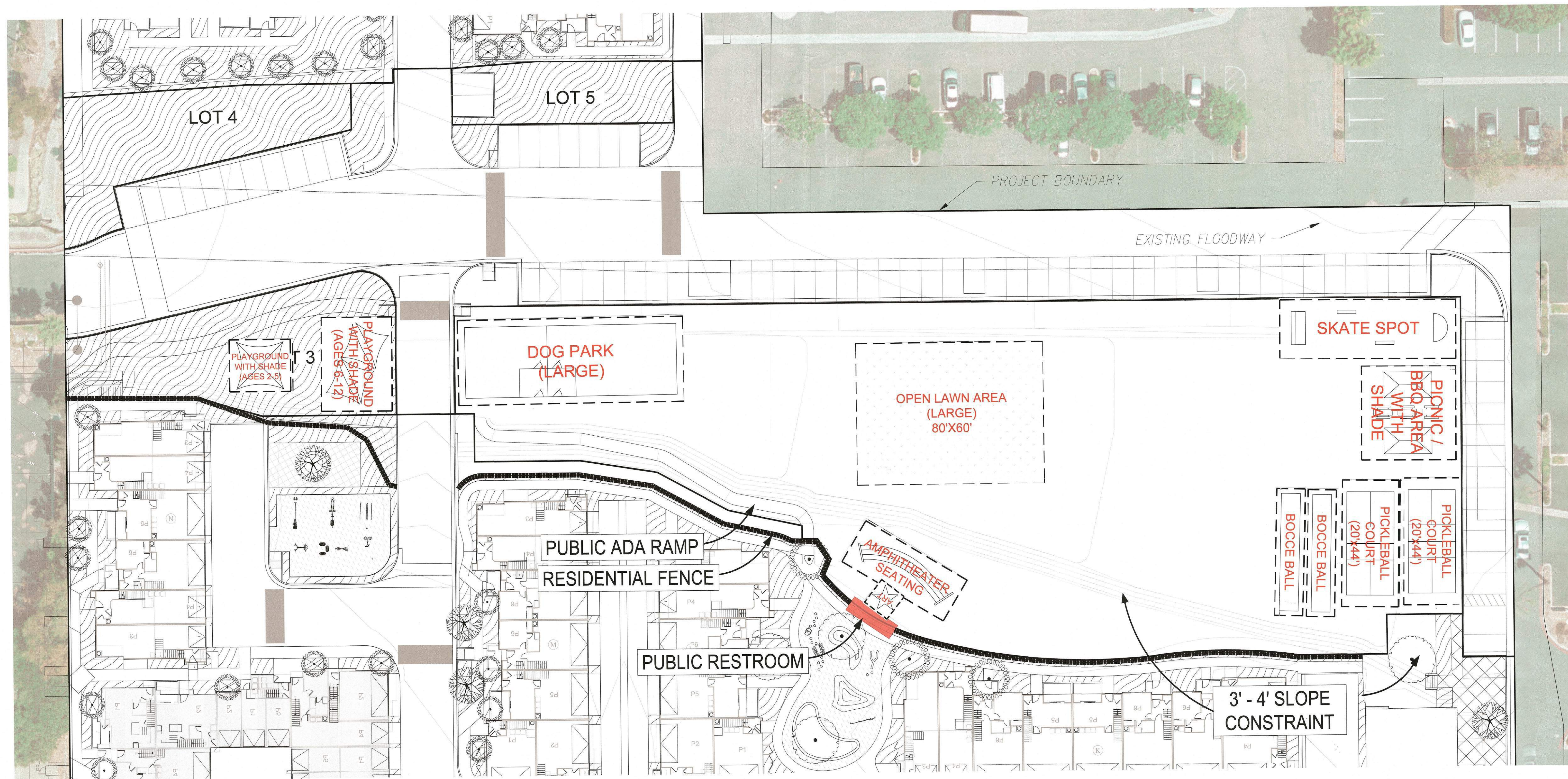
**SAN MARCOS RESTAURANT ROW
 COMMUNITY MEETING - PARK BASE**

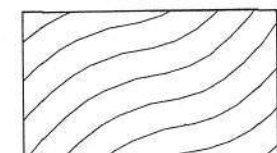


**Pink House
 becomes ice cream shop.
 People can easily walk between the two
 All-wheel park
 between
 two restaurants**



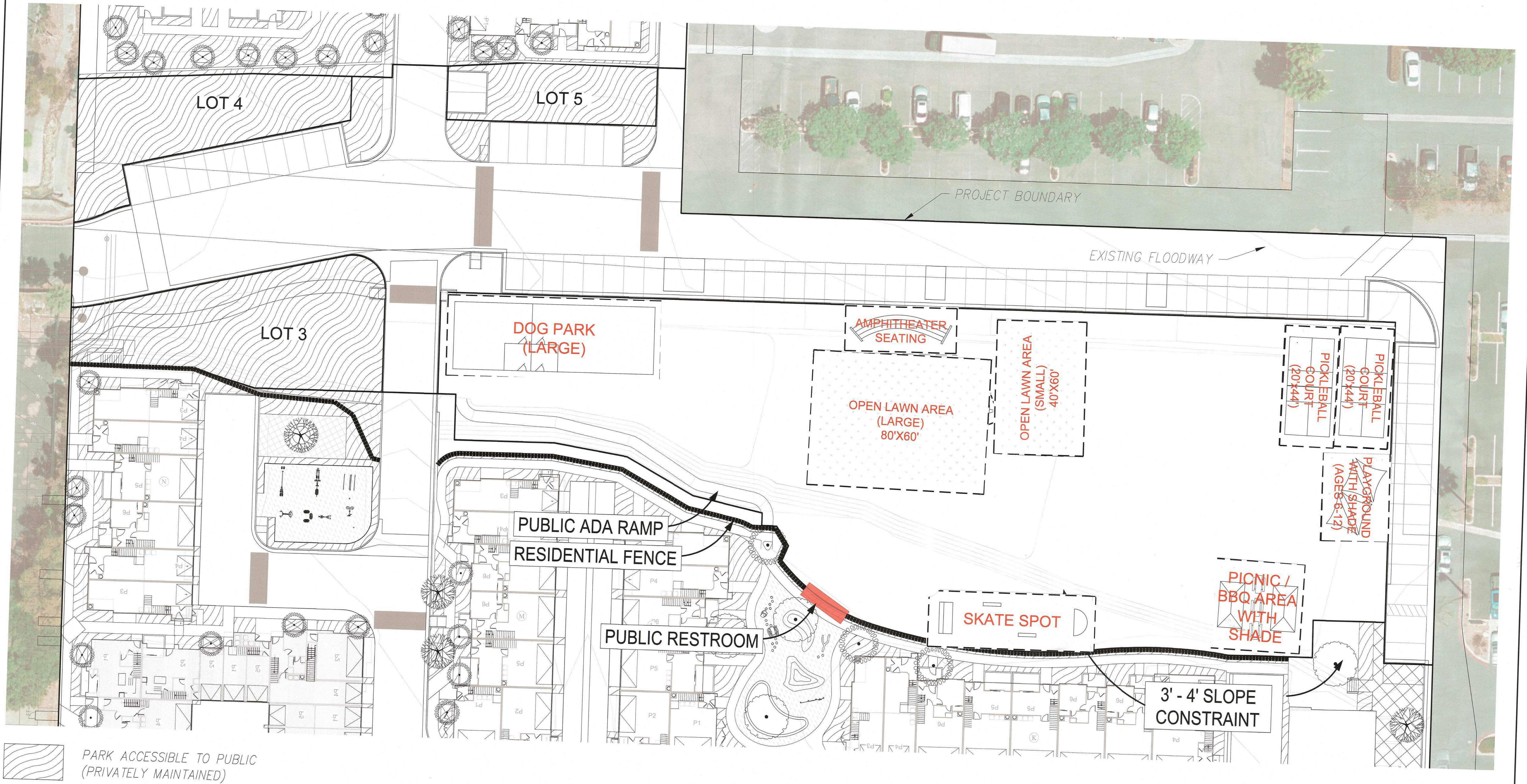
Row - should you have a concrete row machine??



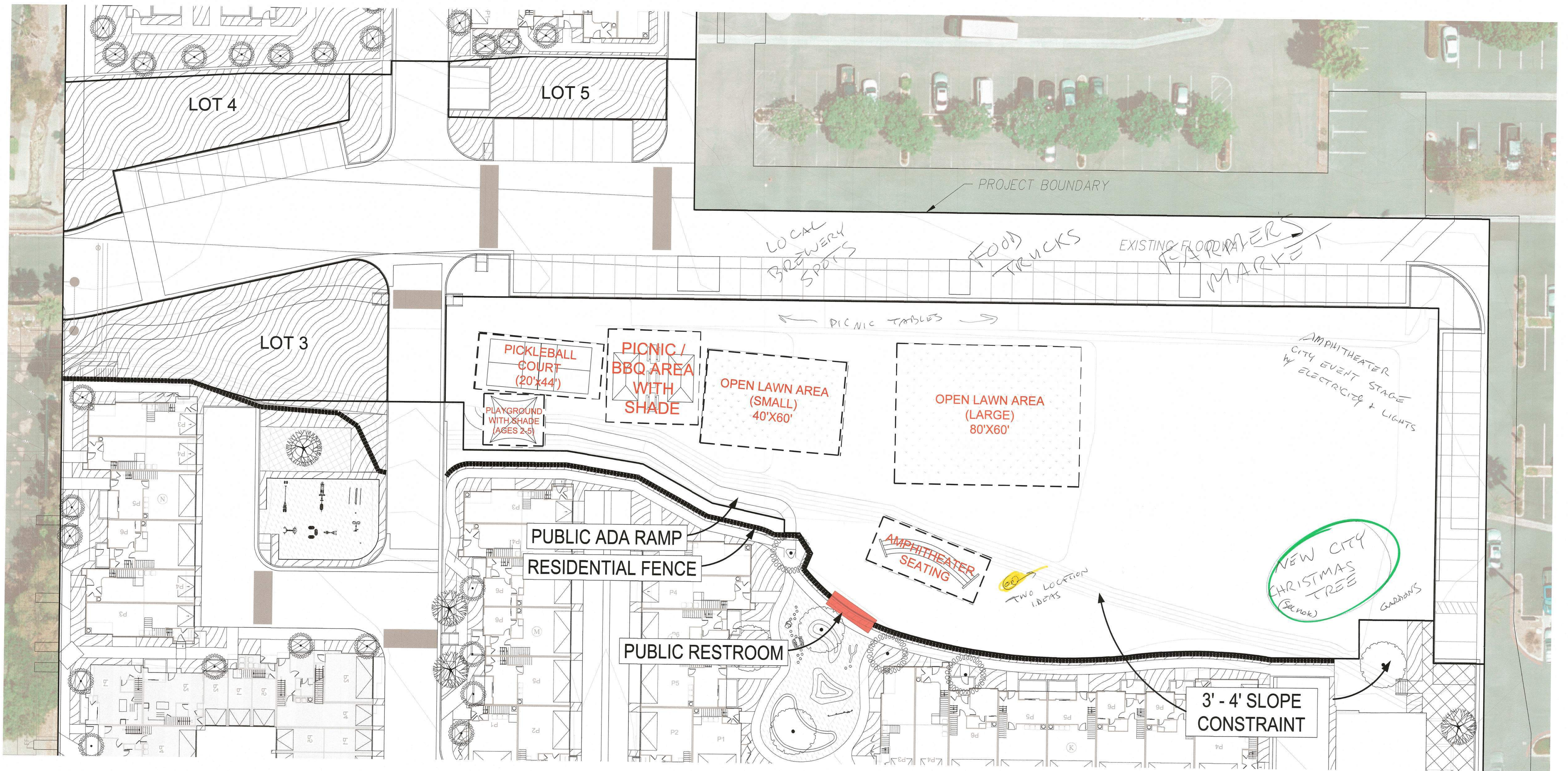
 PARK ACCESSIBLE TO PUBLIC
(PRIVATELY MAINTAINED)

SAN MARCOS RESTAURANT ROW PARK

COMMUNITY MEETING - PARK BASE



SAN MARCOS RESTAURANT ROW PARK
 COMMUNITY MEETING - PARK BASE



 PARK ACCESSIBLE TO PUBLIC (PRIVATELY MAINTAINED)

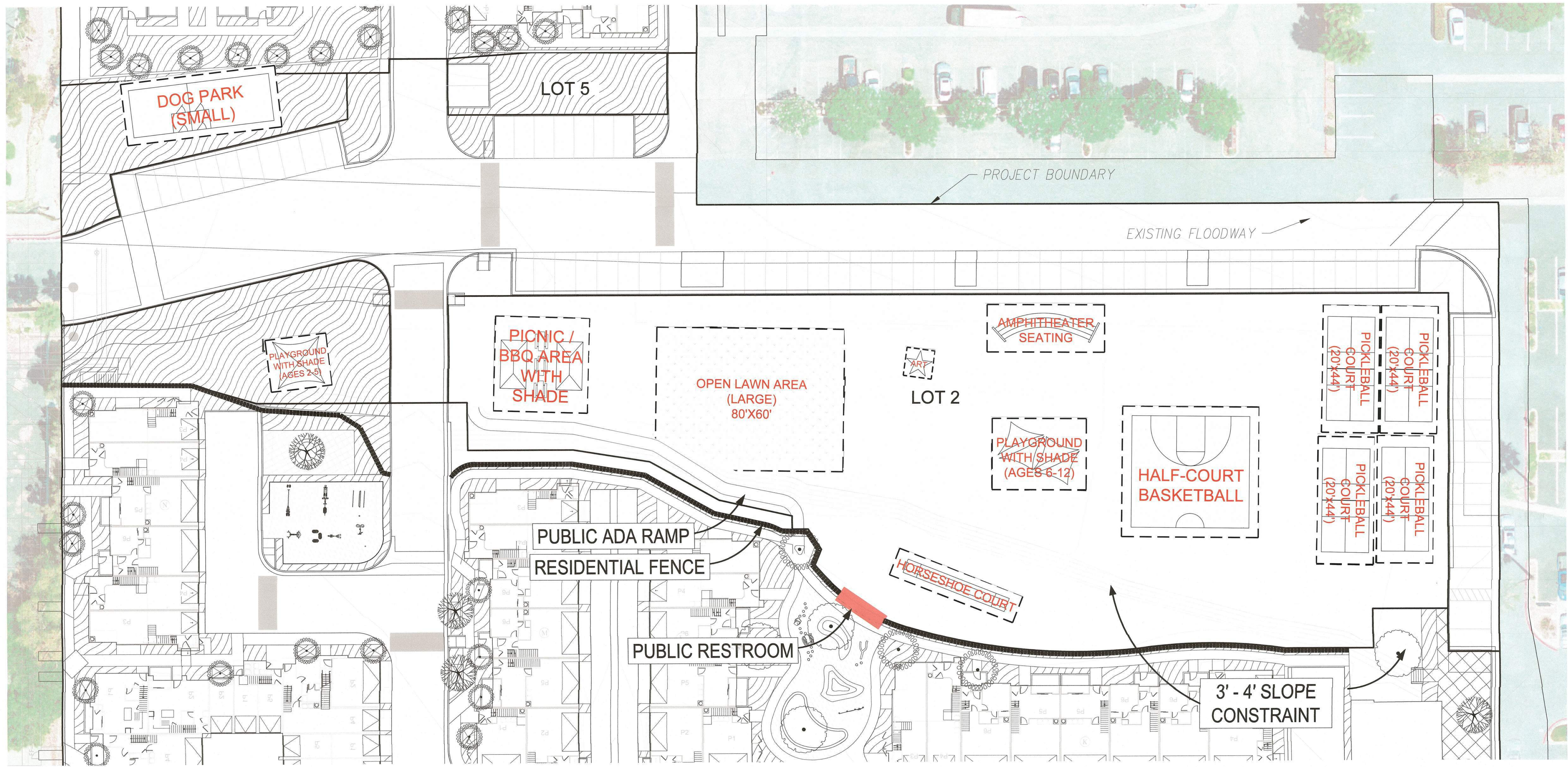
SAN MARCOS RESTAURANT ROW PARK

COMMUNITY MEETING - PARK BASE

SCOTT & ANNA WINN

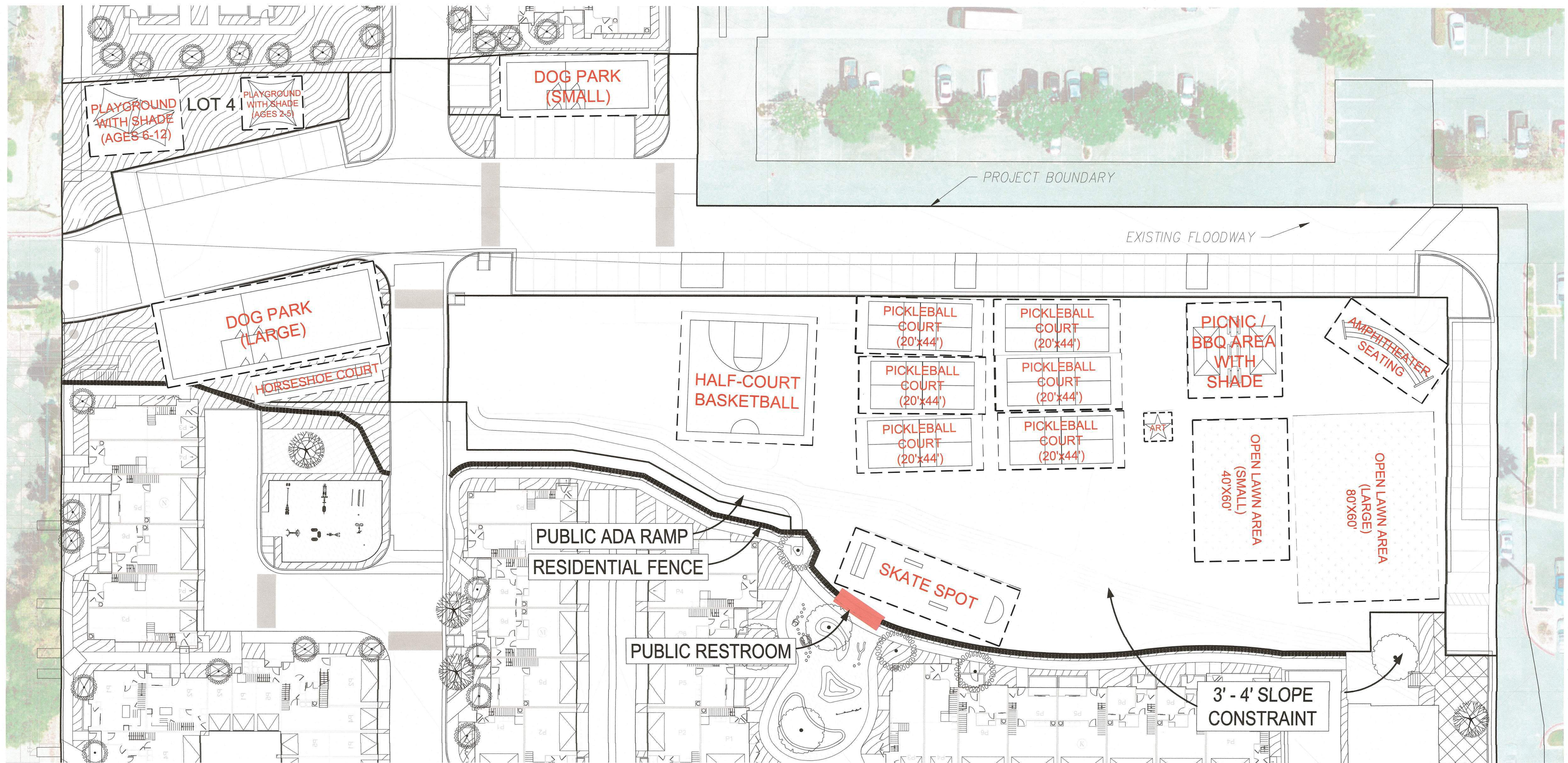
Note: The Christmas tree at City Hall is HORRIBLE. It does not bring joy. It is SAD. It's not a reflection of our beautiful city. We need a new one.

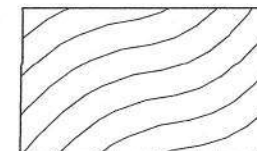
*Note: We don't have a DISC-golf course in San Marcos + that might be a good addition to the park :)



 PARK ACCESSIBLE TO PUBLIC (PRIVATELY MAINTAINED)

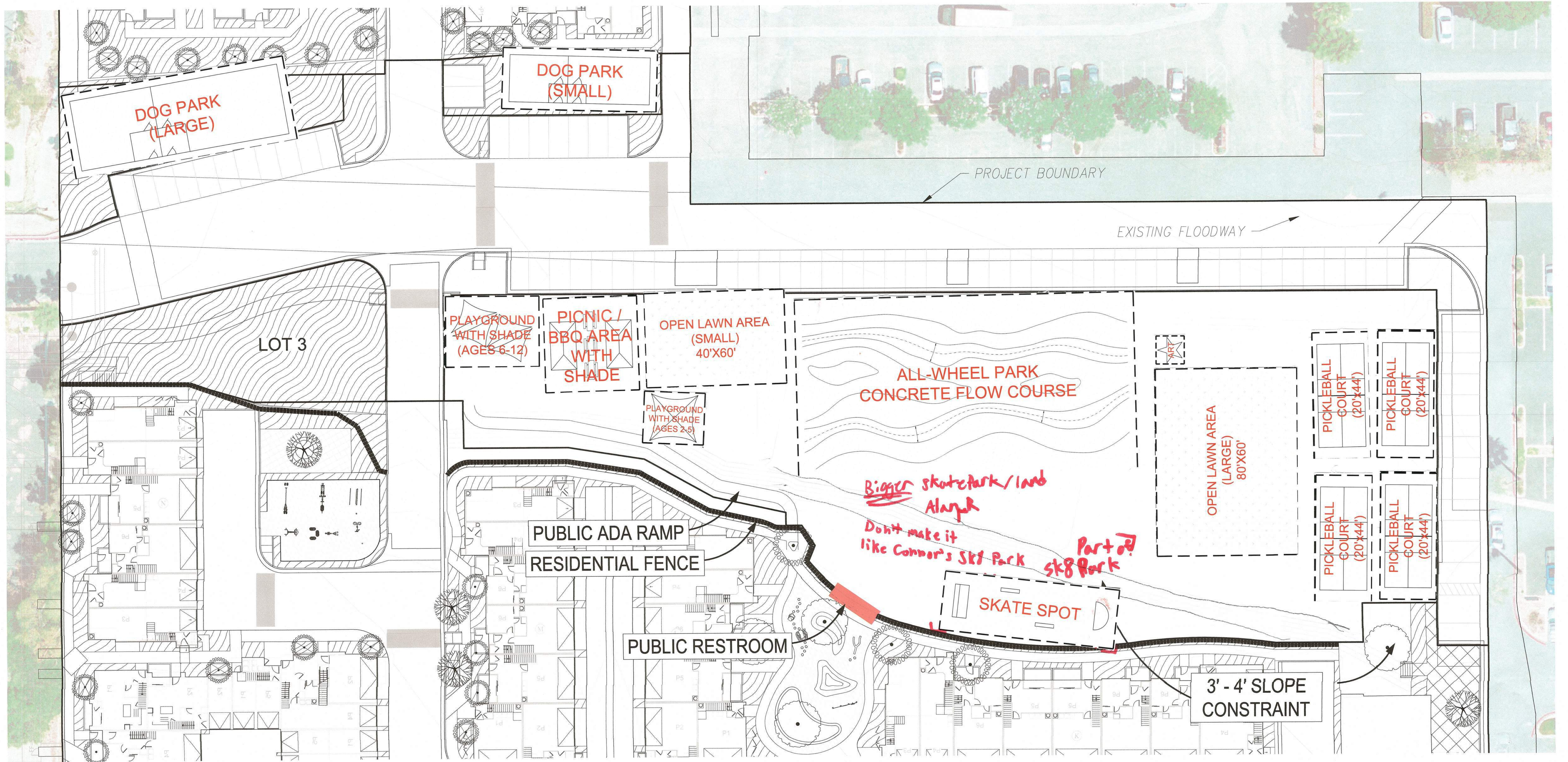
SAN MARCOS RESTAURANT ROW PARK COMMUNITY MEETING - PARK BASE



 PARK ACCESSIBLE TO PUBLIC
(PRIVATELY MAINTAINED)

SAN MARCOS RESTAURANT ROW PARK

COMMUNITY MEETING - PARK BASE



 PARK ACCESSIBLE TO PUBLIC (PRIVATELY MAINTAINED)

SAN MARCOS RESTAURANT ROW PARK

COMMUNITY MEETING - PARK BASE

